



Goldstone New Material (Jiaxing) Co.Ltd

Add: No.333, Baichi Road, Wuyuan Street, Haiyan Country,
Jiaxing City, Zhejiang Province, China, 314300.

Tel: (0086) 15957315079 (001) 3463796416

Email: Info@Goldstoneflooring.com

Web: www.Goldstoneflooring.com



Vinyl Flooring

CATALOG

DURABLE SUSTAINABLE COMFORTABLE



Focus on environment-friendly flooring
Contribute to a sustainable environment



ABOUT US

Goldstone Flooring is a leading exporter and manufacturer of high-quality SPC, WPC and LVT products. It offers over 200 collections to customers throughout the USA, Europe, and other countries. Goldstone Flooring is committed to promoting sustainable and environment-friendly building materials.

Located in Jiaxing , China, Goldstone Flooring was founded on building strong relationships with local communities and close partnerships with local manufacturers.

Our strict quality control and adherence to international standards ensure that we produce floors you can trust for your home or project.

Our Core Competitive Advantages:

- 1) Top-notch product production lines
- 2) Experienced and multinational team
- 3) Streamlined import and export processes
- 4) A large collection of flooring solutions

Our Product series:

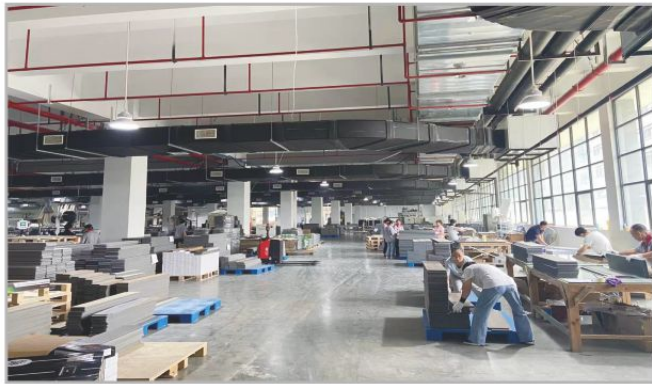
- 1) LVT-Self-Adhesive
- 2) LVT-Glue Down
- 3) LVT-Loose Lay
- 4) SPC
- 5) WPC



LABORATORY



WORKSHOP



SELF ADHESIVE

Technical Data Sheet

Dimensions
6"x36"/18"x18"



① UV-cured polyurethane coating

② Layer of transparent PVC 0.07 mm

③ Printed Decor

④ PVC reinforced

⑤ Green water-soluble adhesive

⑥ PET film

CHARACTERISTICS	TEST	RESULT
Classification	EN685	21~44
Dimensions	ISO24341	6"x36"/18"x18"
Straightness / Squareness	ISO24342	≤0.25mm
Thickness	ISO24346	2mm ± 0.13mm
Wear Layer Thickness	ISO24340	0.07 mm (+13%/ -10%)
Weight	EN430	5.89kg/m²
Abrasion Resistance	EN660:part-1	Group T: ≤0.08mm
Residual Indentation	ISO24343-1	≤0.10mm
Chemical Resistance	EN438	Grade 5
Fire Resistance	EN13501 / ISO9239-1	Class BFLs1 (B1)
Dimensional Stability	ISO23999	≤0.12%
Color Fastness	ISO 105-B02:1994	≥Grade 6
Slip Resistance	AS4586 / DIN 51130	R10
Formaldehyde Emission	EN717-1	E1
Curving	ISO23999	≤1.2mm
Peel Resistance	ISO24345	≥75N/5cm
Anti-scratches	—	≥2500g
Acoustic Performance	EN ISO 717-2	△Lw=15 dB
Cigarette Burn Resistance	EN438-2	Class 3
Flexibility	ISO24344	20mm
Castor Chair	ISO4918	After 12000 cycles, no delamination shall occur. No disturbance to the surface other than a slight change in appearance



GLUE DOWN

Technical Data Sheet

Dimensions

6"x36"/7.25"x48"/9"x60"



- ① UV-cured polyurethane coating
- ② Layer of transparent PVC 0.55mm
- ③ Printed Decor
- ④ PVC reinforced with fiberglass

CHARACTERISTICS	TEST	RESULT
Classification	EN685	21~44
Dimensions	ISO24341	6"x36"/7.25"x48"/9"x60"
Straightness / Squareness	ISO24342	≤0.25mm
Thickness	ISO24346	3mm ± 0.13mm
Wear Layer Thickness	ISO24340	0.55mm (+13%/ -10%)
Weight	EN430	5.89kg/m²
Abrasion Resistance	EN660 :part-1	Group T: ≤0.08mm
Residual Indentation	ISO24343-1	≤0.10mm
Chemical Resistance	EN438	Grade 5
Fire Resistance	EN13501 / ISO9239-1	Class BFLs1 (B1)
Dimensional Stability	ISO23999	≤0.12%
Color Fastness	ISO 105-B02:1994	≥Grade 6
Slip Resistance	AS4586 / DIN 51130	R10
Formaldehyde Emission	EN717-1	E1
Curving	ISO23999	≤1.2mm
Peel Resistance	ISO24345	≥75N/5cm
Anti-scratches	---	≥2500g
Acoustic Performance	EN ISO 717-2	△Lw=15 dB
Cigarette Burn Resistance	EN438-2	Class 3
Flexibility	ISO24344	20mm
Castor Chair	ISO4918	After 25000 cycles, no delamination shall occur. No disturbance to the surface other than a slight change in appearance

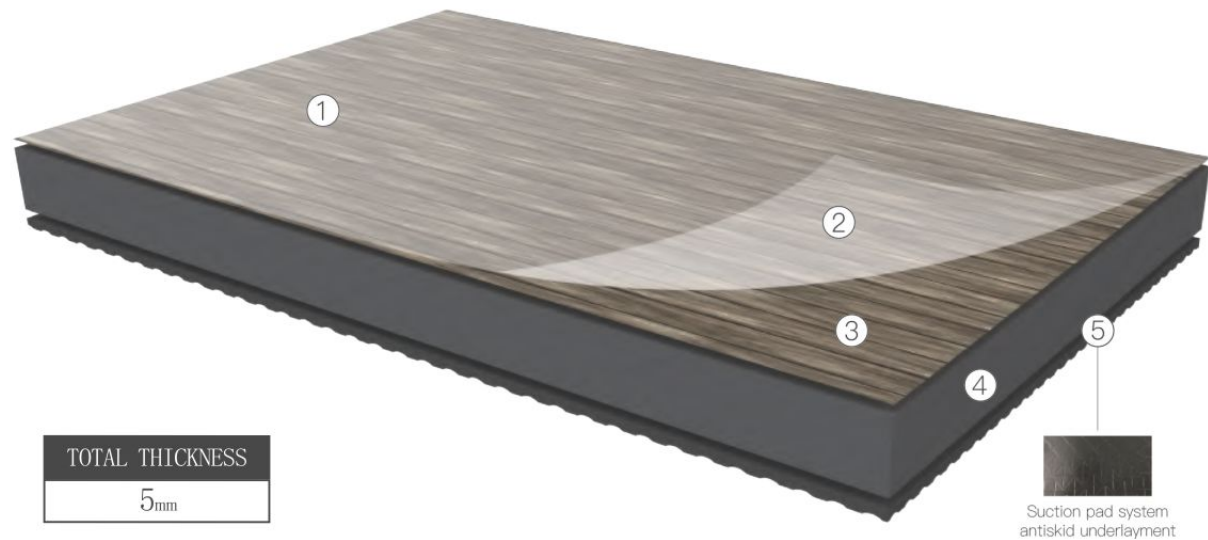


LOOSE LAY

Technical Data Sheet

Dimensions

9"x48"/36"x36"

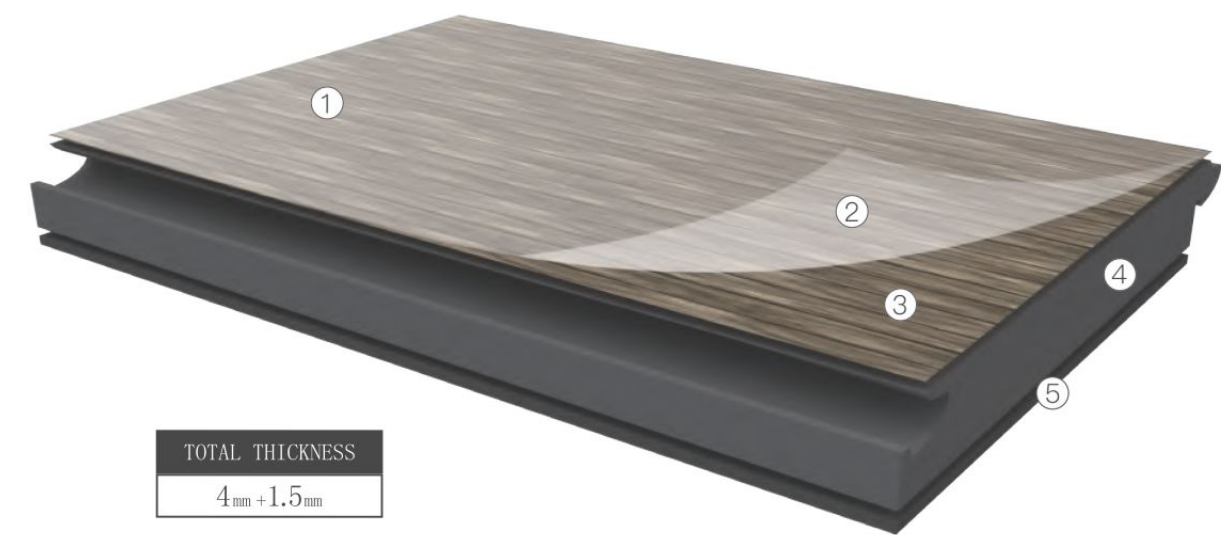


- ① UV-cured polyurethane coating
- ② Layer of transparent PVC 0.55mm
- ③ Printed Decor
- ④ PVC reinforced with fiberglass
- ⑤ Backing PVC with micro antiskid



CHARACTERISTICS	TEST	RESULT
Classification	EN685	21~44
Dimensions	ISO24341	9"x48"/36"x36"
Straightness / Squareness	ISO24342	≤0. 25mm
Thickness	ISO24346	5mm ± 0.13mm
Wear Layer Thickness	ISO24340	0.55mm (+13%/-10%)
Weight	EN430	~9.74kg/m² / 9.59kg/m² (for tile)
Abrasion Resistance	EN660 :part-1	Group T: ≤0.08mm
Residual Indentation	ISO24343-1	≤0.10mm
Chemical Resistance	EN438	Grade 5
Fire Resistance	EN13501 / ISO9239-1	Class BFLs1 (B1)
Dimensional Stability	ISO23999	≤0.12%
Color Fastness	ISO 105-B02:1994	≥Grade 6
Slip Resistance	AS4586 / DIN 51130	R10
Formaldehyde Emission	EN717-1	E1
Curving	ISO23999	≤1.2mm
Peel Resistance	ISO24345	≥75N/5cm
Anti-scratches	---	≥2500g
Acoustic Performance	EN ISO 717-2	△Lw=15 dB
Cigarette Burn Resistance	EN438-2	Class 3
Flexibility	ISO24344	20mm
Castor Chair	ISO4918	After 25000 cycles, no delamination shall occur. No disturbance to the surface other than a slight change in appearance

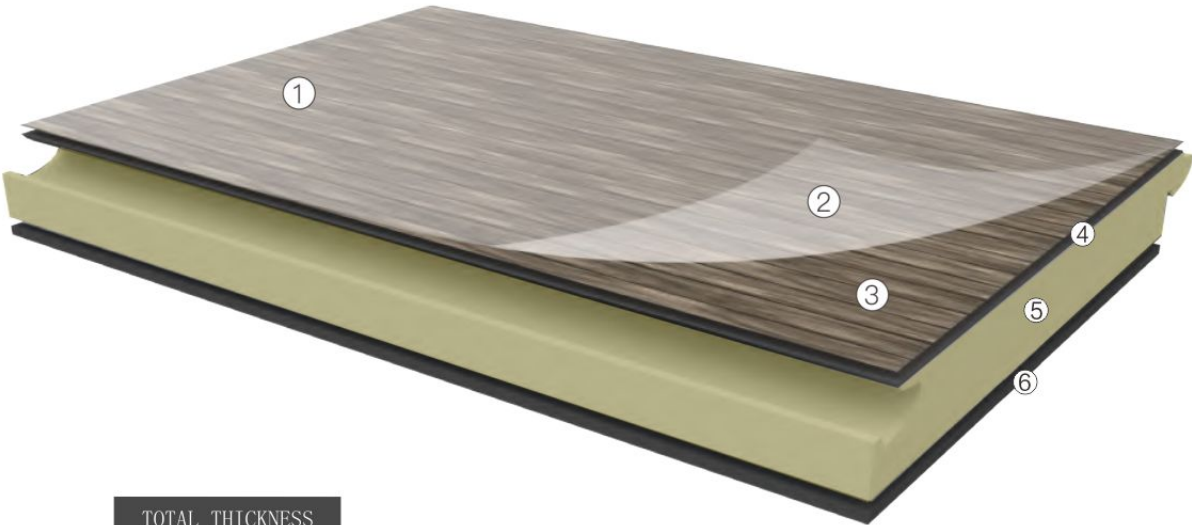




- ① UV-cured polyurethane coating
- ② Layer of transparent PVC 0.3mm
- ③ Printed Decor
- ④ Rigid Core 3.7 mm
- ⑤ IXPE 1.5mm(1mm, 2mm)

CHARACTERISTICS	TEST	RESULT
Classification	EN685	21~44
Dimensions	ISO24341	7.2"x48.03"/12"x24"
Straightness / Squareness	ISO24342	≤0.25mm
Thickness	ISO24346	5.5mm ± 0.13mm
Wear Layer Thickness	ISO24340	0.3mm (+13%/ -10%)
Weight	EN430	7.8kg/m²
Abrasion Resistance	EN660 :part-1	Group T: ≤0.08mm
Residual Indentation	ISO24343-1	≤0.10mm
Chemical Resistance	EN438	Grade 5
Fire Resistance	EN13501 / ISO9239-1	Class BFLs1 (B1)
Dimensional Stability	ISO23999	≤0.12%
Color Fastness	ISO 105-B02:1994	≥Grade 6
Slip Resistance	AS4586 / DIN 51130	R10
Formaldehyde Emission	EN717-1	E1
Curving	ISO23999	≤1.2mm
Peel Resistance	ISO24345	≥75N/5cm
Anti-scratches	---	≥2500g
Acoustic Performance	EN ISO 717-2	△Lw=15 dB
Cigarette Burn Resistance	EN438-2	Class 3
Locking Strength	ISO24334	≥1200N/50m
Flexibility	ISO24344	20mm
Impact Resistance	EN1534	7.4 Kgf/mm³
Castor Chair	ISO4918	After 25000 cycles, no delamination shall occur. No disturbance to the surface other than a slight change in appearance





TOTAL THICKNESS
6.3mm + 1.5mm

- ① UV-cured polyurethane coating
- ② Layer of transparent PVC 0.3mm
- ③ Printed Decor
- ④ LVT middle layer 1.2mm
- ⑤ WPC core 4.8mm
- ⑥ IXPE1.5mm(1mm,2mm)

CHARACTERISTICS	TEST	RESULT
Classification	EN685	21~44
Dimensions	ISO24341	7.25"x48"/9"x60"
Straightness / Squareness	ISO24342	≤0.25mm
Thickness	ISO24346	7.8mm ± 0.13mm
Wear Layer Thickness	ISO24340	0.3mm (+13%/ -10%)
Weight	EN430	10.8kg/m²
Abrasion Resistance	EN660 :part-1	Group T: ≤0.08mm
Residual Indentation	ISO24343-1	≤0.10mm
Chemical Resistance	EN438	Grade 5
Fire Resistance	EN13501 / ISO9239-1	Class BFLs1 (B1)
Dimensional Stability	ISO23999	≤0.12%
Color Fastness	ISO 105-B02:1994	≥Grade 6
Slip Resistance	AS4586 / DIN 51130	R10
Formaldehyde Emission	EN717-1	E1
Curving	ISO23999	≤1.2mm
Peel Resistance	ISO24345	≥75N/5cm
Anti-scratches	---	≥2500g
Acoustic Performance	EN ISO 717-2	ΔLw=15 dB
Cigarette Burn Resistance	EN438-2	Class 3
Locking Strength	ISO24334	≥1200N/50m
Flexibility	ISO24344	20mm
Impact Resistance	EN1534	7.4 Kgf/mm³
Castor Chair	ISO4918	After 25000 cycles, no delamination shall occur. No disturbance to the surface other than a slight change in appearance

Rigid Core Luxury Vinyl Flooring
Recommended For Kitchen



Goldstone SPC floors are 100% waterproof. They are the perfect solution for creating your dream home.

- Product Details**
- Wear Layer (in mils): 12
 - Compatible Subfloor Types: Concrete; Wood; Tile; Vinyl
 - Surface Type: Embossed
 - Scratch Resistant: Yes
 - Product Warranty: 10 Years Warranty

GS8188011

Recommended sizes

Items	Thickness	Wear Layer (mils)	Size (Inch)		Underlayment
GS-SPC 3.5mm	5mm	12mils	7"x48"	12"x24"	Optional
GS-SPC 4mm	6mm	12mils	7"x48"	12"x24"	Optional
GS-SPC 5mm	7mm	12mils	7"x48"	12"x24"	Optional

Rigid Core Luxury Vinyl Flooring
Recommended For Bathroom



Goldstone SPC floors are 100% waterproof. They are the perfect solution for creating your dream home.

- Product Details**
- Wear Layer (in mils): 20
 - Compatible Subfloor Types: Concrete; Wood; Tile; Vinyl
 - Surface Type: Embossed
 - Scratch Resistant: Yes
 - Product Warranty: 10 Years Warranty

GS8163021

Recommended sizes

Items	Thickness	Wear Layer (mils)	Size (Inch)		Underlayment
GS-SPC 3.5mm	5mm	12mils	7"x48"	12"x24"	Optional
GS-SPC 4mm	6mm	12mils	7"x48"	12"x24"	Optional
GS-SPC 5mm	7mm	12mils	7"x48"	12"x24"	Optional

Rigid Core Luxury Vinyl Flooring
Recommended For Basement



Goldstone SPC floors are stronger and easier to install than other floors. They also are durable and sustainable.

- Product Details**
- Wear Layer (in mils): 12
 - Compatible Subfloor Types: Concrete; Wood; Tile; Vinyl
 - Surface Type: Embossed
 - Scratch Resistant: Yes
 - Product Warranty: 10 Years Warranty

Recommended sizes

Items	Thickness	Wear Layer (mils)	Size (Inch)	Underlayment
GS-SPC 3.5mm	5mm	12mils	7"x48" 9"x48"	Optional
GS-SPC 4mm	6mm	12mils	7"x48" 9"x48"	Optional
GS-SPC 5mm	7mm	12mils	7"x48" 9"x48"	Optional

Rigid Core Luxury Vinyl Flooring
Recommended For Commercial



Goldstone SPC floors are inert and waterproof. The new anti-bacteria underlayment not only makes the installation easier but also offers excellent noise insulation.

- Product Details**
- Wear Layer (in mils): 28
 - Compatible Subfloor Types: Concrete; Wood; Tile; Vinyl
 - Surface Type: Embossed
 - Scratch Resistant: Yes
 - Product Warranty: 10 Years Warranty

Recommended sizes

Items	Thickness	Wear Layer (mils)	Size (Inch)	Underlayment
GS-SPC 5mm	5mm	28mils	7"x48" 9"x48"	Optional
GS-SPC 6mm	6mm	28mils	7"x48" 9"x48"	Optional
GS-SPC 7mm	7mm	28mils	7"x48" 9"x48"	Optional
GS-SPC 8mm	8mm	28mils	7"x48" 9"x48"	Optional



MORE COLORS





MORE COLORS





MORE COLORS



GS8288691



GS8288712



GS8287110



GS8288728



GS8288755



GS8288854



GS8288864



GS8288911



MORE COLORS





MORE COLORS



Rigid Core Luxury Vinyl Flooring Installation (SPC/ WPC)

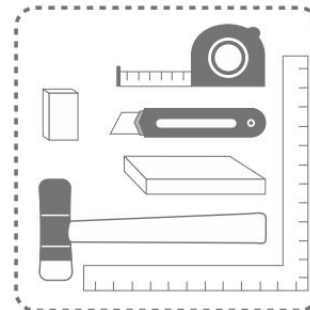
General Instructions

Preparing the floor: For best results, installation must be performed on a stable, flat, dry and dust-free clean surface. Subfloor flatness tolerance is ¼ in over 10 ft and should not slope more than 1 per 6 in any direction. Cabinetry should be installed first, then the flooring.

Color Variations: Slight shade variations may occur during manufacturing. For best results, It is recommended to mix several cartons to properly blend the shade.



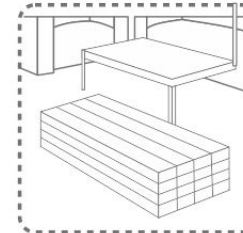
Installation Kit



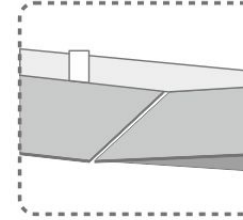
Recommended tools for installation:

1. Tape measure
2. Square
3. Utility knife
4. Tapping block
5. Soft faced hammer
6. ¼ in spacers

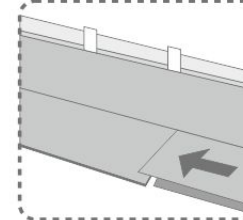
Rigid Core Luxury Vinyl Flooring



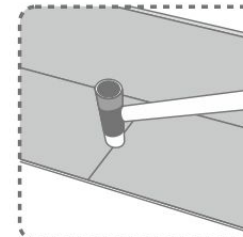
Product should be stored horizontally in a dry area away from direct sunlight. Do not leave next to heat or cooling ducts.



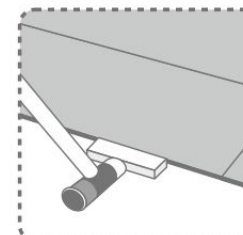
Start installation in a corner of the room, with tongue facing the wall, working from left to right. Leave an expansion gap of ¼ in (6mm) around room perimeter and vertical objects.



When laying the first row, click the short side of the plank into the previous one and press it by hand, Then use a soft faced hammer and tap to lock completely. Continue to complete the starter row maintaining a straight edge for the following row.



When laying the second row, insert the tongue into the groove on the long edge, holding the back edge slightly up.



Slide the plank up to the short end of the previous plank.

Then drop and lock. Use a soft faced hammer on the short end to ensure a complete lock. Use a tapping block and soft faced hammer on long ends.

Rigid Core Luxury Vinyl Flooring
 Accessories



6 mm Thick x 45mm Wide x 2400mm
 Length 3-in-1 Molding

- Coordinates with colors Luxury Vinyl Plank Flooring
- Vinyl 3-in-1 moldings are multifunctional & easy to install
- Can be used as a reducer, T-molding end cap

Put the finishing touches on your luxurious vinyl plank flooring with the exclusive Coordinating 3-in-1 Molding from Home Decorators Collection. It can function as a reducer, T-Molding and endcap, quarter rounds and stair nose. Finish in style with an easy installation.

- Versatile molding can be used as a reducer, t-molding and/or end cap
- Clean with a damp cloth
- Color coordinated with Home Decorators Collection stony oak grey, model #60198
- High wear resistant aluminum oxide laminate surface with a vinyl core
- Comes with a cold roll steel track for easy installation



6 mm Thick x 45mm Wide x 2400mm
 Length 3-in-1 Reducer

Multi-Purpose Reducer is used to transition floors of unequal height from wood/laminate floors to carpet, vinyl or tile. This molding will provide a seamless look when transitioning between flooring surfaces. Provides a beautiful finished look to any room in your home.

- Starry light, light color, smooth finish
- Appropriate grade for installation: above grade, on grade or below grade
- Coordinates with 3 mm to 10 mm thick vinyl flooring
- Can be installed over concrete and wooden subfloors
- Residential and commercial use
- Clean with a damp cloth
- Vinyl moldings are extruded out of 100% PVC and wrapped with the same decorative vinyl as the floor
- PVC wear layer
- There may be a slight color variation due to the nature of the decor
- All online orders for this item ship via parcel ground and may arrive in multiple boxes
- Moldings are installed with a galvanized metal track, included in package

Rigid Core Luxury Vinyl Flooring



24 mm Thick x 110mm Wide x 2400mm
 Length Flush Stair Nose

Flush Stair Nosing adds beauty to your home while absorbing much of the staircase traffic. Stair Nosing is designed for installation on the edge of the stair tread. This trim adds a beautiful finished look to your home.

- Color finish matches your flooring
- Appropriate grade for installation: Above grade, On grade or Below grade
- Can be installed over both concrete and wooden subfloors
- Residential use
- Clean with a damp cloth
- All online orders for this item ship via parcel ground and may arrive in multiple boxes



12 mm Thick x 80mm Height x 2400mm
 Length Base Board

- Primed to match your flooring and complementary look
- An attractive way to hide uneven walls and floors where they meet
- Covers up uneven flooring edges and protects wall from knicks

Base mouldings are applied where walls meet floors. Base mouldings are a beautiful way to hide uneven walls and floors where they meet. Creating a foundation for walls, base mouldings give any room that well-grounded look, visually making walls look well set and stable. Used with a base cap and a base shoe, base mouldings can have that built up, larger than life feel. Base mouldings are also great at covering up uneven flooring edges.

- Common mouldings fastened where walls meet floors, protects the wall from furniture, kicks
- Fiberboard is economical and easy to work with
- Coated with a high hide water based primer allowing for superior paint adherence
- Fiberboard is a consistent substrate with a smooth flawless surface

OUR CERTIFICATION



NO.12818Q20176R0S



Goldstone

